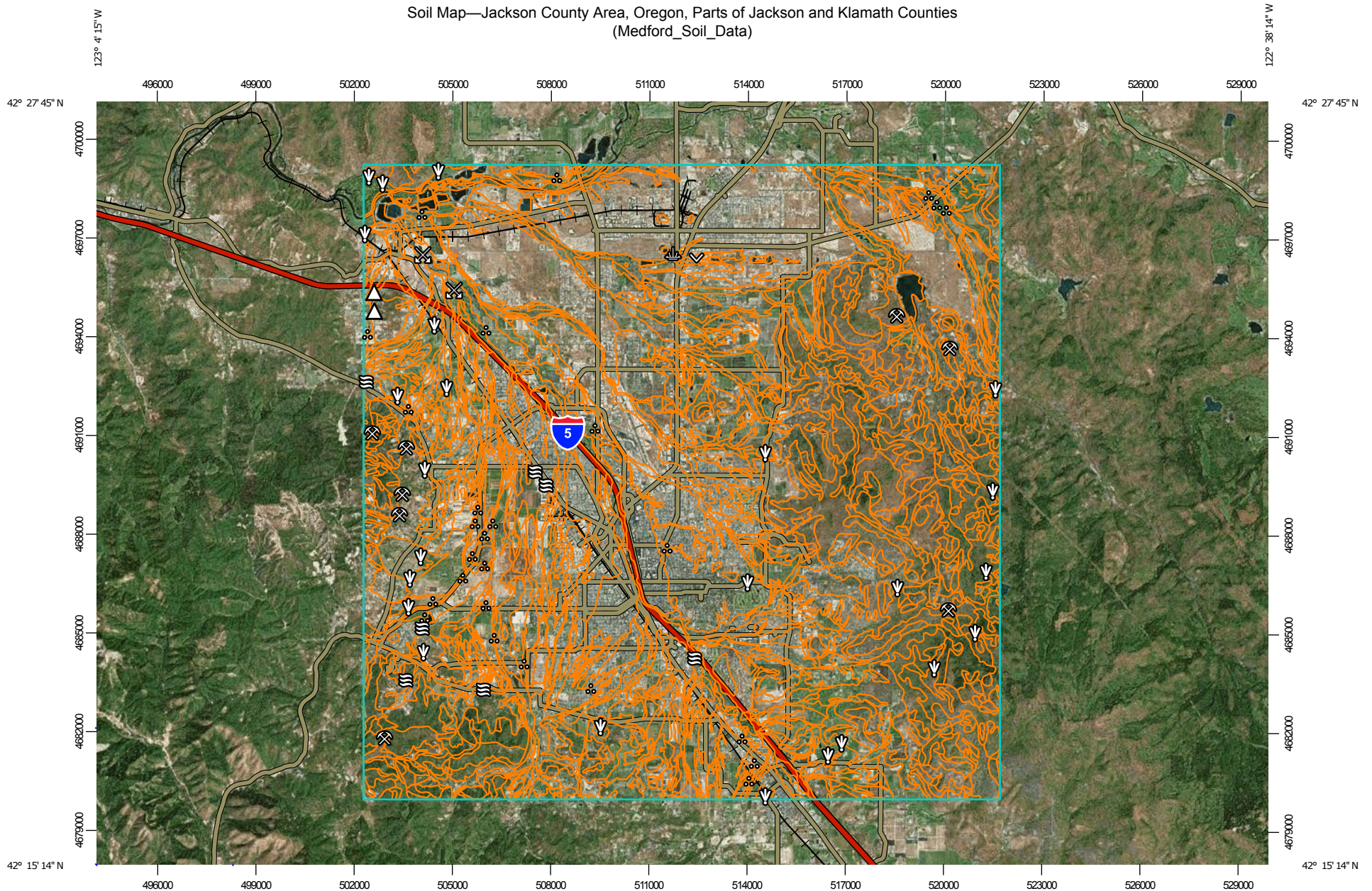
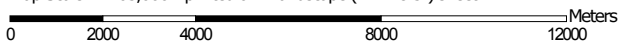


Soil Map—Jackson County Area, Oregon, Parts of Jackson and Klamath Counties
(Medford_Soil_Data)



Map Scale: 1:163,000 if printed on A landscape (11" x 8.5") sheet.



Map projection: Web Mercator Corner coordinates: WGS84 Edge tics: UTM Zone 10N WGS84



MAP LEGEND

Area of Interest (AOI)

 Area of Interest (AOI)

Soils

 Soil Map Unit Polygons

 Soil Map Unit Lines

 Soil Map Unit Points

Special Point Features



Blowout



Borrow Pit



Clay Spot



Closed Depression



Gravel Pit



Gravelly Spot



Landfill



Lava Flow



Marsh or swamp



Mine or Quarry



Miscellaneous Water



Perennial Water



Rock Outcrop



Saline Spot



Sandy Spot



Severely Eroded Spot



Sinkhole



Slide or Slip



Sodic Spot



Spoil Area



Stony Spot



Very Stony Spot



Wet Spot



Other



Special Line Features

Water Features



Streams and Canals

Transportation



Rails



Interstate Highways



US Routes



Major Roads



Local Roads

Background



Aerial Photography

MAP INFORMATION

The soil surveys that comprise your AOI were mapped at 1:20,000.

Please rely on the bar scale on each map sheet for map measurements.

Source of Map: Natural Resources Conservation Service

Web Soil Survey URL:

Coordinate System: Web Mercator (EPSG:3857)

Maps from the Web Soil Survey are based on the Web Mercator projection, which preserves direction and shape but distorts distance and area. A projection that preserves area, such as the Albers equal-area conic projection, should be used if more accurate calculations of distance or area are required.

This product is generated from the USDA-NRCS certified data as of the version date(s) listed below.

Soil Survey Area: Jackson County Area, Oregon, Parts of Jackson and Klamath Counties

Survey Area Data: Version 14, Mar 23, 2017

Soil map units are labeled (as space allows) for map scales 1:50,000 or larger.

Date(s) aerial images were photographed: Jan 1, 1999—Dec 31, 2003

The orthophoto or other base map on which the soil lines were compiled and digitized probably differs from the background imagery displayed on these maps. As a result, some minor shifting of map unit boundaries may be evident.

Map Unit Legend

Jackson County Area, Oregon, Parts of Jackson and Klamath Counties (OR632)			
Map Unit Symbol	Map Unit Name	Acres in AOI	Percent of AOI
2A	Abin silty clay loam, 0 to 3 percent slopes	1,002.7	1.1%
6B	Agate-Winlo complex, 0 to 5 percent slopes	14,182.4	15.3%
10B	Barron coarse sandy loam, 0 to 7 percent slopes	1,120.5	1.2%
17C	Brader-Debenger loams, 1 to 15 percent slopes	2,021.3	2.2%
17E	Brader-Debenger loams, 15 to 40 percent slopes	1,167.7	1.3%
21A	Camas sandy loam, 0 to 3 percent slopes	107.1	0.1%
22A	Camas gravelly sandy loam, 0 to 3 percent slopes	39.2	0.0%
23A	Camas-Newberg-Evans complex, 0 to 3 percent slopes	1,819.1	2.0%
26G	Caris-Offenbacher gravelly loams, 50 to 75 percent south slopes	19.4	0.0%
27B	Carney clay, 1 to 5 percent slopes	4,263.9	4.6%
27D	Carney clay, 5 to 20 percent slopes	6,132.4	6.6%
28D	Carney cobbly clay, 5 to 20 percent slopes	1,076.6	1.2%
28E	Carney cobbly clay, 20 to 35 percent slopes	4,945.9	5.3%
29D	Carney cobbly clay, high precipitation, 5 to 20 percent slopes	1,148.2	1.2%
29E	Carney cobbly clay, high precipitation, 20 to 35 percent slopes	130.4	0.1%
30E	Carney-Tablerock complex, 20 to 35 percent slopes	466.0	0.5%
31A	Central Point sandy loam, 0 to 3 percent slopes	2,280.8	2.5%
33A	Coker clay, 0 to 3 percent slopes	4,963.7	5.3%
33C	Coker clay, 3 to 12 percent slopes	727.1	0.8%
34B	Coleman loam, 0 to 7 percent slopes	2,851.1	3.1%

Jackson County Area, Oregon, Parts of Jackson and Klamath Counties (OR632)			
Map Unit Symbol	Map Unit Name	Acres in AOI	Percent of AOI
35A	Cove clay, 0 to 3 percent slopes	1,302.4	1.4%
43B	Darow silty clay loam, 1 to 5 percent slopes	601.9	0.6%
43D	Darow silty clay loam, 5 to 20 percent slopes	1,330.6	1.4%
43E	Darow silty clay loam, 20 to 35 percent slopes	657.4	0.7%
44C	Debenger-Brader loams, 1 to 15 percent slopes	2,445.1	2.6%
44E	Debenger-Brader loams, 15 to 40 percent slopes	206.0	0.2%
55A	Evans loam, 0 to 3 percent slopes	585.5	0.6%
61A	Foehlin gravelly loam, 0 to 3 percent slopes	151.7	0.2%
76A	Gregory silty clay loam, 0 to 3 percent slopes	3,143.5	3.4%
81G	Heppsie clay, 35 to 70 percent north slopes	383.7	0.4%
82G	Heppsie-McMullin complex, 35 to 70 percent south slopes	1,323.2	1.4%
97A	Kerby loam, 0 to 3 percent slopes	160.5	0.2%
100A	Kubli loam, 0 to 3 percent slopes	1,637.4	1.8%
100B	Kubli loam, 3 to 7 percent slopes	43.7	0.0%
102B	Langellain-Brader loams, 1 to 7 percent slopes	326.0	0.4%
108B	Manita loam, 2 to 7 percent slopes	479.0	0.5%
108D	Manita loam, 7 to 20 percent slopes	379.4	0.4%
108E	Manita loam, 20 to 35 percent slopes	128.7	0.1%
108F	Manita loam, 35 to 50 percent slopes	24.1	0.0%
109E	Manita-Vannoy complex, 20 to 40 percent slopes	470.5	0.5%
110E	McMullin gravelly loam, 3 to 35 percent slopes	218.4	0.2%
111G	McMullin-McNull gravelly loams, 35 to 60 percent south slopes	23.8	0.0%
112F	McMullin-Medco complex, 12 to 50 percent slopes	603.3	0.6%

Jackson County Area, Oregon, Parts of Jackson and Klamath Counties (OR632)			
Map Unit Symbol	Map Unit Name	Acres in AOI	Percent of AOI
113E	McMullin-Rock outcrop complex, 3 to 35 percent slopes	1,859.4	2.0%
113G	McMullin-Rock outcrop complex, 35 to 60 percent slopes	493.6	0.5%
114E	McNull loam, 12 to 35 percent north slopes	100.1	0.1%
114G	McNull loam, 35 to 60 percent north slopes	224.7	0.2%
116E	McNull-McMullin gravelly loams, 12 to 35 percent south slopes	8.8	0.0%
117G	McNull-McMullin complex, 35 to 60 percent north slopes	127.5	0.1%
118E	McNull-Medco complex, 12 to 50 percent slopes	13.0	0.0%
119F	McNull-Medco complex, high precipitation, 12 to 50 percent slopes	352.4	0.4%
120C	Medco clay loam, 7 to 12 percent slopes	25.8	0.0%
121E	Medco cobbly clay loam, 12 to 50 percent north slopes	125.0	0.1%
122E	Medco cobbly clay loam, 12 to 50 percent south slopes	46.7	0.1%
123F	Medco clay loam, high precipitation, 12 to 50 percent north slopes	77.6	0.1%
125F	Medco-McMullin complex, 12 to 50 percent slopes	752.8	0.8%
126F	Medco-McNull complex, 12 to 50 percent slopes	282.8	0.3%
127A	Medford silty clay loam, 0 to 3 percent slopes	7,201.2	7.8%
128B	Medford clay loam, gravelly substratum, 0 to 7 percent slopes	118.6	0.1%
133A	Newberg fine sandy loam, 0 to 3 percent slopes	276.6	0.3%
139A	Padigan clay, 0 to 3 percent slopes	1,871.3	2.0%
141A	Phoenix clay, 0 to 3 percent slopes	1,022.6	1.1%
146	Pits, gravel	279.7	0.3%
150E	Provig very gravelly loam, 15 to 35 percent slopes	182.7	0.2%

Jackson County Area, Oregon, Parts of Jackson and Klamath Counties (OR632)			
Map Unit Symbol	Map Unit Name	Acres in AOI	Percent of AOI
151C	Provig-Agate complex, 5 to 15 percent slopes	1,065.1	1.1%
152B	Randcore-Shoat complex, 0 to 5 percent slopes	11.7	0.0%
154	Riverwash	152.6	0.2%
157B	Ruch silt loam, 2 to 7 percent slopes	1,095.1	1.2%
158B	Ruch gravelly silt loam, 2 to 7 percent slopes	790.1	0.9%
158D	Ruch gravelly silt loam, 7 to 20 percent slopes	286.0	0.3%
162B	Selmac loam, 2 to 7 percent slopes	5.2	0.0%
164D	Shefflein loam, 7 to 20 percent slopes	877.1	0.9%
165E	Shefflein loam, 20 to 35 percent north slopes	23.8	0.0%
166E	Shefflein loam, 20 to 35 percent south slopes	206.3	0.2%
186H	Tablerock-Rock outcrop complex, 35 to 110 percent slopes	360.5	0.4%
187A	Takilma cobbly loam, 0 to 3 percent slopes	3.1	0.0%
188E	Tallowbox gravelly sandy loam, 20 to 35 percent north slopes	16.9	0.0%
188G	Tallowbox gravelly sandy loam, 35 to 70 percent north slopes	347.7	0.4%
189E	Tallowbox gravelly sandy loam, 20 to 35 percent south slopes	48.9	0.1%
189G	Tallowbox gravelly sandy loam, 35 to 60 percent south slopes	302.8	0.3%
195E	Vannoy silt loam, 12 to 35 percent north slopes	955.6	1.0%
195F	Vannoy silt loam, 35 to 55 percent north slopes	764.2	0.8%
196E	Vannoy silt loam, 12 to 35 percent south slopes	1,472.0	1.6%
197F	Vannoy-Voorhies complex, 35 to 55 percent slopes, MLRA 5	545.8	0.6%
198A	Winlo very gravelly clay loam, 0 to 3 percent slopes	192.9	0.2%
W	Water	804.0	0.9%

Jackson County Area, Oregon, Parts of Jackson and Klamath Counties (OR632)			
Map Unit Symbol	Map Unit Name	Acres in AOI	Percent of AOI
Totals for Area of Interest		92,861.8	100.0%